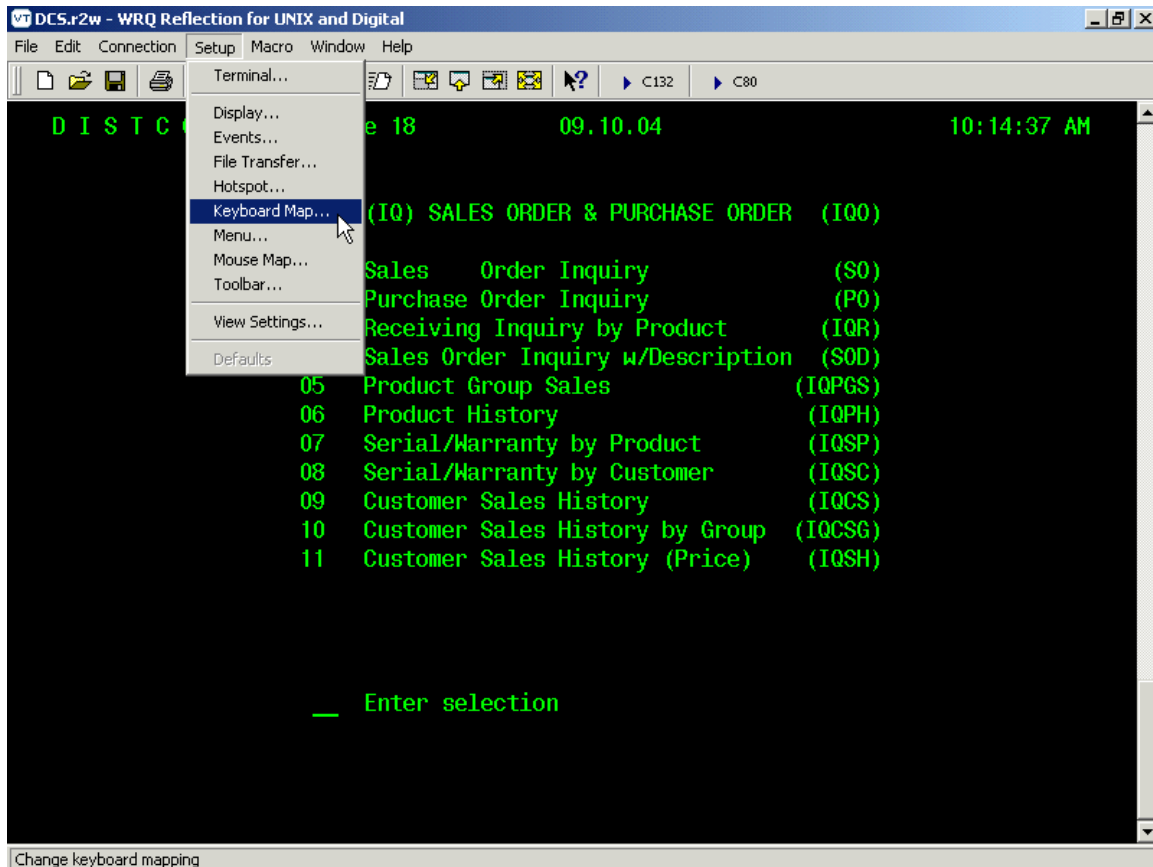


## Keyboard Function keys settings for Reflections

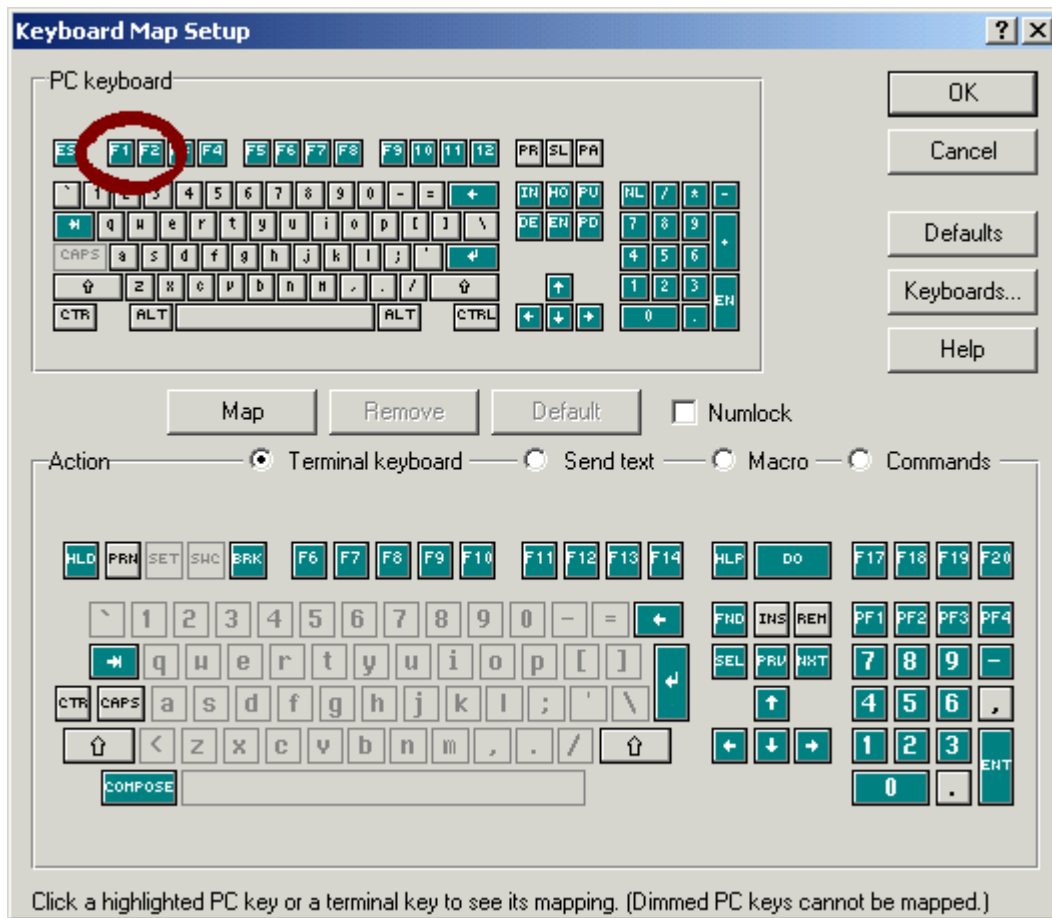
*NOTE: Steps may vary, this will depend on your version of Reflection.*

1. Choose Setup from the menu bar. From the sub menu, choose Keyboard Map.

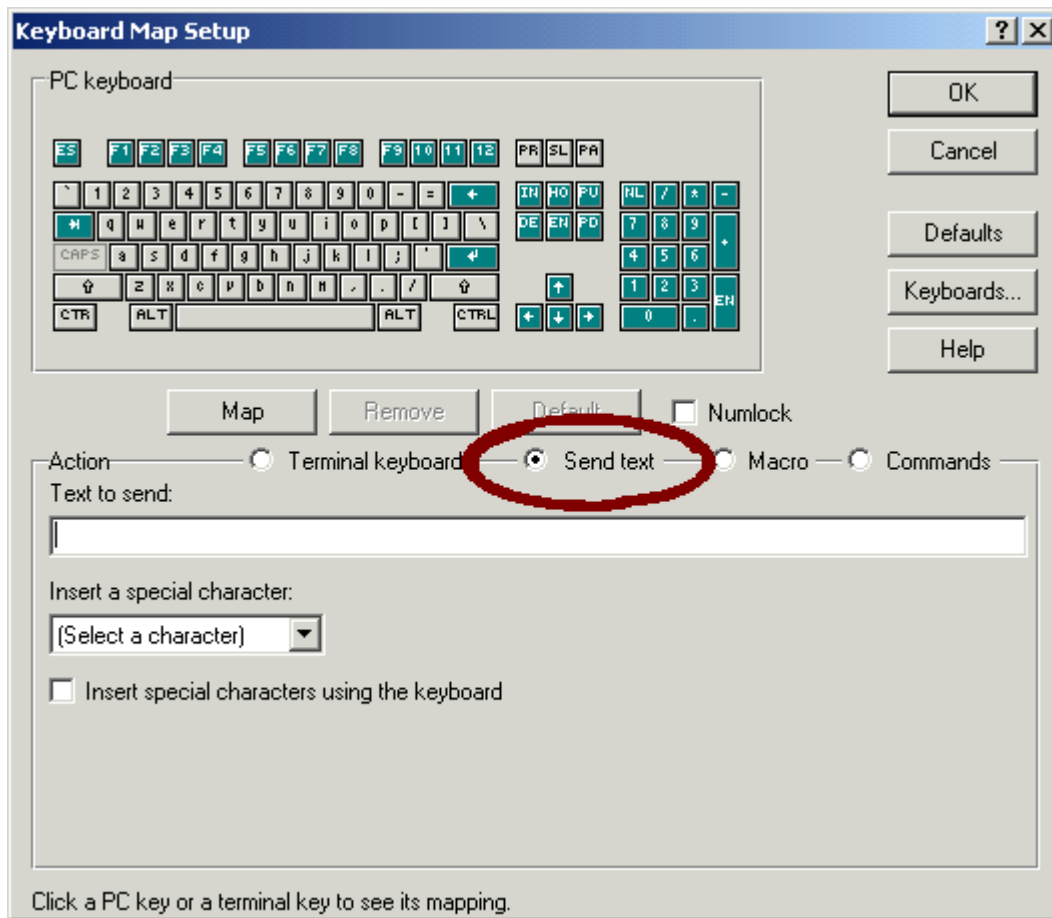


*The Keyboard Map Setup window will pop up.*

2. Select the function key you will be programming (F1 – F12). In the “PC Keyboard” section up top.



3. Click the “Send Text” radio button in the center of the window.

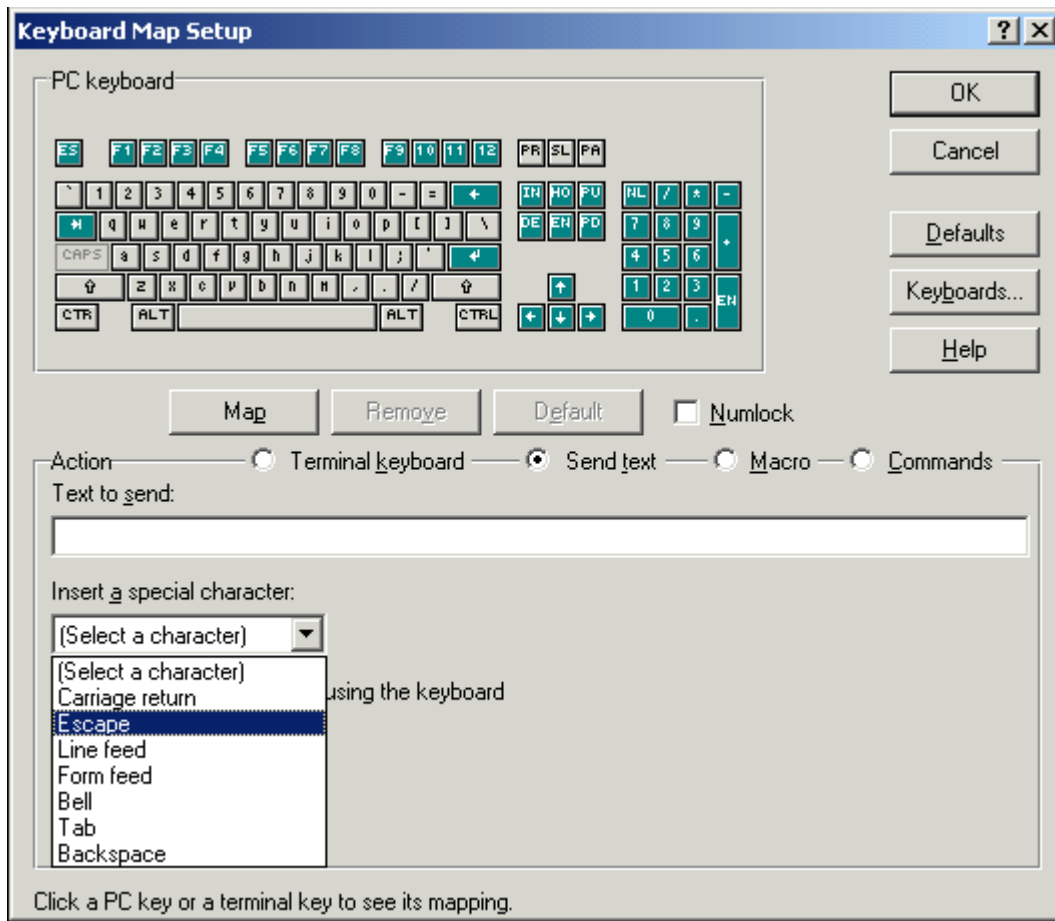


*You will notice that the “Action” part of the window changes.*

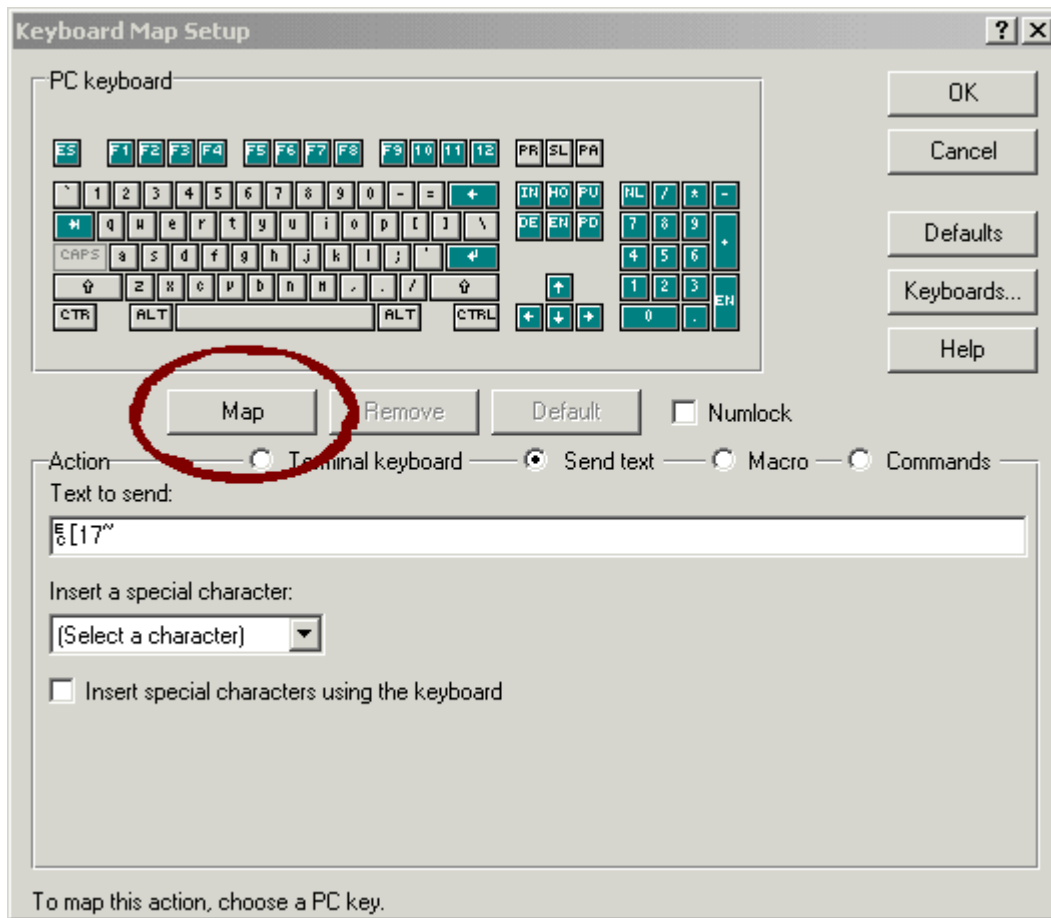
4. From the “Insert a special character” drop down menu, select “Escape”. This should put an “ec” in the “Text to send” text field.

Press the left bracket key; “[“, on your keyboard, the number of the key to be programmed (below) and finally the “~” (tilde key).

For example: EC[17~



5. Once the string is keyed in, Click on “MAP” to bind this string to the appropriate function key.



6. Repeat steps 3 thru 6 until the functions keys are programmed.

F1 = EC[17~

F2 = EC[18~

F3 = EC[19~

F4 = EC[20~

F5 = EC[21~

F6 = EC[23~

F7 = EC[24~

F8 = EC[25~

F9 = EC[26~

F10 = EC[28~

F11 = EC[29~

F12 = EC[31~

INSERT = EC[@

DELETE = EC[P (uppercase P)

MINUS = - (just the minus key)

**NOTE: Do NOT forget to save these settings or they will be lost when you close your Reflection**

**window.**